

# 佶慶電機有限公司

## CHESHIRE ELECTRIC COMPANY, LLC

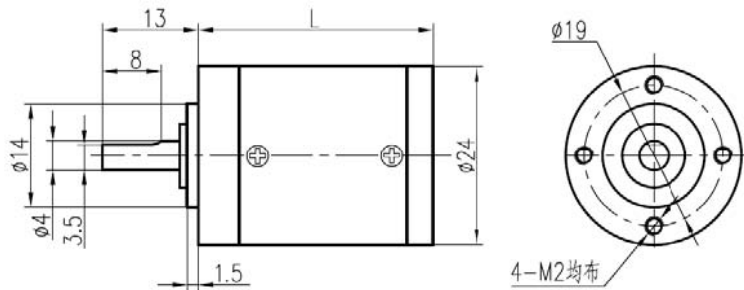
**型號：JR024-XXXA01-A00 標準型齒輪箱 允許轉矩範圍：0.05N.m~0.5N.m**

### 行星齒輪減速器 PLANETARY GEAR HEAD

內齒圈材料 Housing material	金屬 metal
輸出軸承形式 Bearing at output	滾動軸承 Sleeve bearings
徑向負載 Radial load(10mm from flange)	≤12N
軸向負載 Shaft axial load	≤7N
徑向間隙 Radial play of shaft	≤0.04 mm
軸向間隙 Thrust play of shaft	≤0.3 mm
背隙(無負載時) Backlash, at no-load	≤3°
輸出軸最大承受壓入力 Shaft press fit force, max	≤60N



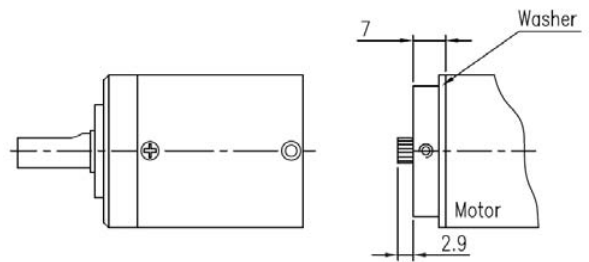
### ★外形和安裝尺寸 Dimensions



### ★馬達軸齒輪型式 Pinion Specifications

模數 Module	0.4					
齒數 No. of teeth	11	17				
壓力角 Pressure angle	20°					
孔徑 Hole diameter	常規 Φ2.02可提供 Φ2.32					
減速比 Reduction ratio	1/5.2 1/27 1/139 1/720 1/3730	1/3.7 1/14 1/19 1/51 1/71 1/100 1/189 1/264 1/369 1/516 1/981 1/1370 1/1913 1/2671				

### ★馬達軸齒輪裝配 Motor Installation



### ★標準減速比型式 Gearboxes Specifications

減速比 Reduction ratio	實際減速比 Exact reduction ratio	額定允許負載 Rated tolerance torque	瞬間允許負載 Max momentary tolerance torque	效率 Efficiency	L (mm)	重量 (g) Weight(g)
1/3.7 1/5.2	1/3.71 1/5.18	0.05 N.m	0.15 N.m	90 %	25.4±0.5	35
1/14 1/19 1/27	1/13.76 1/19.22 1/26.83	0.2 N.m	0.6 N.m	81 %	27.8±0.5	39
1/51 1/71 1/100 1/139	1/51.06 1/71.30 1/99.55 1/138.99	0.4N.m	1.2 N.m	73 %	32.7±0.5	47
1/189 1/264 1/369 1/516 1/720	1/189.45 1/264.52 1/369.32 1/515.66 1/719.98	0.5 N.m	1.5 N.m	66 %	37.6±0.5	58
1/981 1/1370 1/1913 1/2671 1/3730	1/981.35 1/1370.2 1/1913.1 1/2671.1 1/3729.5	0.5 N.m	1.5 N.m	59 %	42.5±0.5	67

使用相對濕度：20%-85%RH  
 使用相對溫度：-10℃~+80℃  
 輸入與輸出的旋轉方向：同向  
 推薦馬達最大輸入轉速：<5000RPM