

佶慶電機有限公司

CHESHIRE ELECTRIC COMPANY, LLC

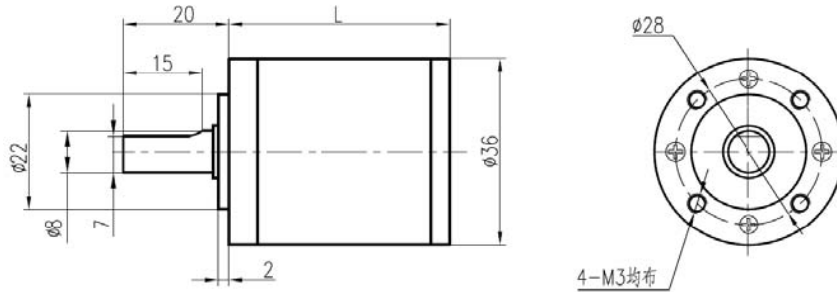
型號：JR036-XXXA01-A00 標準型齒輪箱 允許轉矩範圍：0.2N.m~2.0N.m

行星齒輪減速器 PLANETARY GEAR HEAD

內齒圈材料 Housing material	金屬 metal
輸出軸承形式 Bearing at output	滾珠軸承 Sleeve bearings
徑向負載 Radial load(10mm from flange)	≤35N
軸向負載 Shaft axial load	≤25N
徑向間隙 Radial play of shaft	≤0.04 mm
軸向間隙 Thrust play of shaft	≤0.3 mm
背隙(無負載時) Backlash, at no-load	≤3°
輸出軸最大承受壓入力 Shaft press fit force, max	≤100N



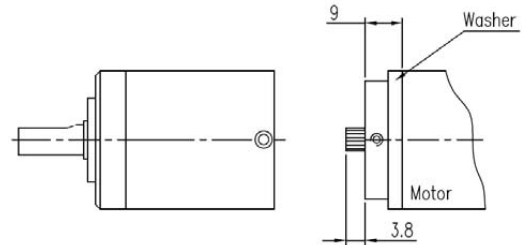
★外形和安裝尺寸 Dimensions



★馬達軸齒輪型式 Pinion Specifications

模數 Module	0.5	
齒數 No. of teeth	11	17
壓力角 Pressure angle	20°	
孔徑 Hole diameter	$\Phi 2.98 \quad \Phi 3.16 \quad \Phi 3.48$	
減速比 Reduction ratio	1/5.2 1/27 1/139 1/720 1/3730	1/3.7 1/14 1/19 1/51 1/71 1/100 1/189 1/264 1/369 1/516 1/981 1/1370 1/1913 1/2671

★馬達軸齒輪裝配 Motor Installation



★標準減速比型式 Gearboxes Specifications

減速比 Reduction ratio	實際減速比 Exact reduction ratio	額定允許負載 Rated tolerance torque	瞬間允許負載 Max momentary tolerance torque	效率 Efficiency	L (mm)	重量 (g) Weight(g)
1/3.7 1/5.2	1/3.71 1/5.18	0.2 N.m	0.6 N.m	90 %	31.0±0.5	182
1/14 1/19 1/27	1/13.76 1/19.22 1/26.83	0.8 N.m	2.5 N.m	81 %	35.8±0.5	191
1/51 1/71 1/100 1/139	1/51.06 1/71.30 1/99.55 1/138.99	1.6 N.m	5.0 N.m	73 %	42.1±0.5	230
1/189 1/264 1/369 1/516 1/720	1/189.45 1/264.52 1/369.32 1/515.66 1/719.98	2.0 N.m	6.0 N.m	66 %	48.9±0.5	273
1/981 1/1370 1/1913 1/2671 1/3730	1/981.35 1/1370.2 1/1913.1 1/2671.1 1/3729.5	2.0 N.m	6.0 N.m	59 %	55.8±0.5	316

使用相對濕度：20%-85%RH

使用相對溫度：-10°C~+80°C

輸入與輸出的旋轉方向：同向

推薦馬達最大輸入轉速：<5000RPM