

1

2

3

4

5

6

A

A

B

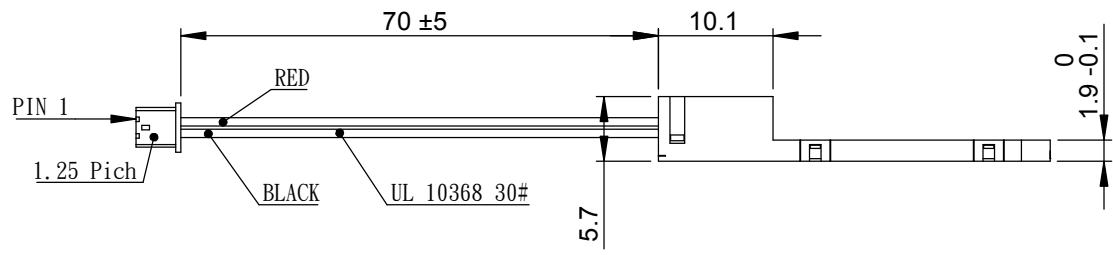
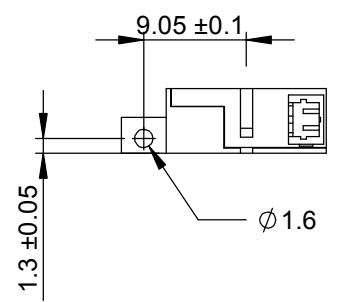
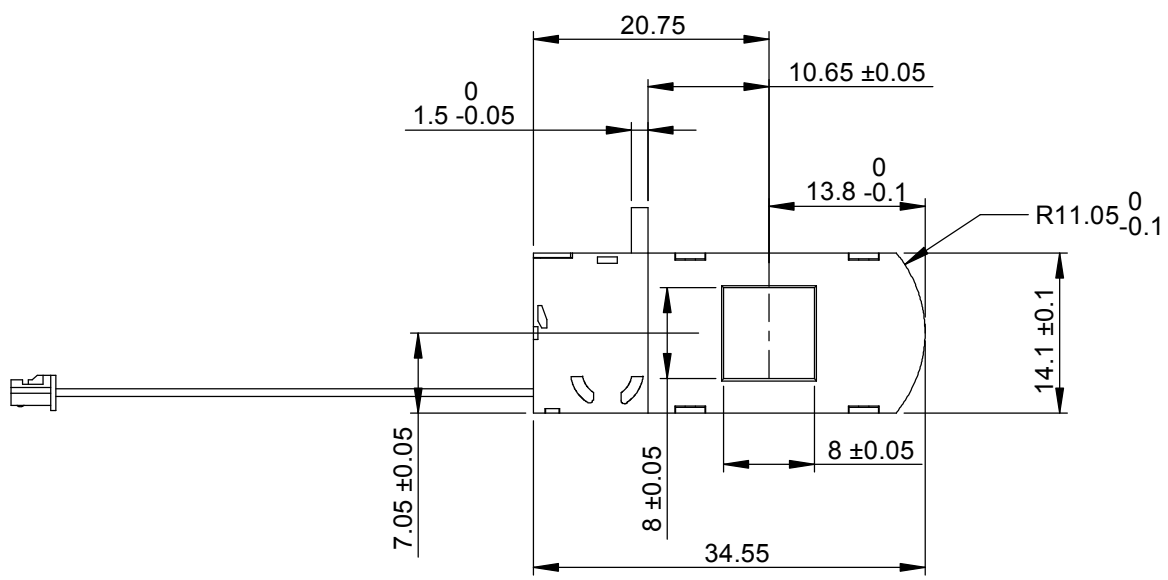
B

C

C

D

D



PIN	COLOR	Dummy	IR CUT
1	RED	+	-
2	BLACK	-	+
Connector : Molex Japan 51021-0200(pitch 1.25)			
Wire : UL10368#30 (50mm±5mm)			
Voltage : DC 3-5V			
Resistance : 20Ω±15% (25°C)			

第三角法	製圖	Tony	Cheshire Electric Copmany , LLC	
所有尺寸單位都是mm(除非有另外指定)	設計	Adam	Part No: OICR-IR645-32	
	審核	<i>Adam</i>	name: IR-CUT645(無固定罩-線長 70mm-2P-Red1)	
繪製比例	1.5:1	繪製日期	2018/2/7	Qty: 1 Rev: A

1

2

3

4

5

6