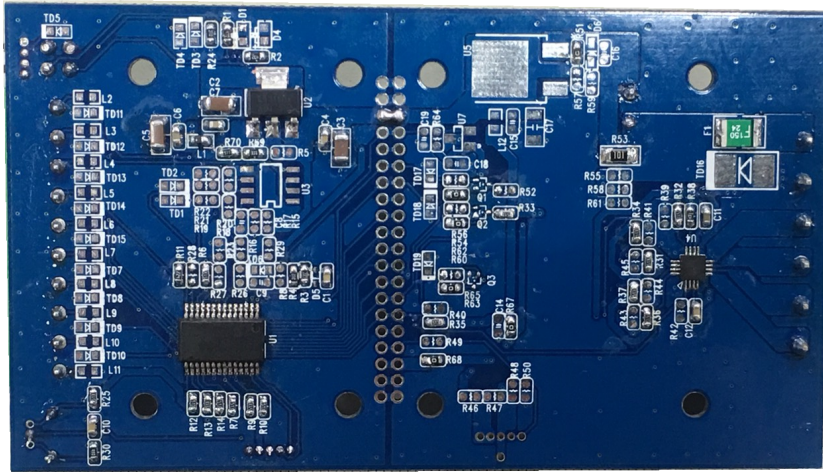


佶慶電機有限公司

CHESHIRE ELECTRIC COMPANY, LLC

2 Phase Bipolar Stepping Motor Driver 2相步進馬達驅動器

MODEL OPH1-16V2A0-2	DRIVER SPECIFICATIONS 驅動器規格書	Page: 1 OF 1
------------------------	---------------------------------	--------------



驅動器規格 Motor Driver Specifications

輸入電源 Input Voltage	DC2.5V~16V
驅動電流 Operation Current	Max. 2A
驅動方式 Drivring Method	兩相激磁。Bipolar
控制功能 Control Functions	<ol style="list-style-type: none">脈波輸入。Pulse Input正/反轉。Direction control CW/CCW微步控制。Microstep control(Full, 1/2, 1/4, 1/8, 1/16, 1/32, 1/64, 1/128)激磁啟動/解除。Holding ON/OFF定電流調整。Reference voltage for winding current set by RS-232. (PS. You must use scope to measure the winding current and adjust by RS-232 to your need.)使用RS232通訊介面控制步進馬達驅動板動作。All functions of the stepping motor driver are controlled by RS-232 interface.
保護功能 Protections	<ol style="list-style-type: none">電源逆接保護功能：輸入端電壓正負極接反時，馬達無法運轉。 1. Polarity Protection: If power polarity error, the motor can not be operated.馬達過電流保護功能(ISD)：馬達運轉電流超過額定值時，自動斷流保護，避免馬達過電流燒毀。需斷電，故障排除後，才可重新通電運轉。 2. Over-current detection(ISD): When motor draws more current over the max. current limit, the driver board will be shut off automatically. Correct the error, re-start the power.過溫保護(TSD)：驅動IC溫度超過145°C停止工作，直到驅IC驅動器降到130°C以下，重新供電恢復正常工作。 3. Thermal shutdown(TSD): If the temperature of the driver IC is Over 145°C, it will be shut down. Until the driver IC's temperature drop below 130°C, restart the power.
工作溫度 Operating Temperature	- 10°C~60°C
外型尺寸 Size	99x56x20mm
重量 Weight	17g
備註 Remark	<ol style="list-style-type: none">無外殼、端子台、可變電阻、LED、指撥開關。 1. No Case、Terminal block、VR、LED、Dip Switch。由RS-232通訊協定碼控制動作。 2. Control by RS-232 Interface only.