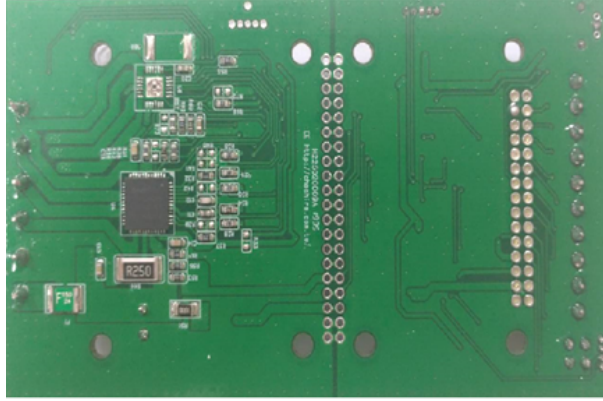


佶慶電機有限公司

CHESHIRE ELECTRIC COMPANY, LLC

2 Phase Bipolar Stepping Motor Driver 2相步進馬達驅動器

MODEL OPH1-40V18A-2	DRIVER SPECIFICATIONS 驅動器規格書	Page: 1 OF 1
------------------------	---------------------------------	--------------



驅動器規格 Motor Driver Specifications

輸入電源 Input Voltage	DC10V~40V
驅動電流 Operation Current	Max. 1.8A
驅動方式 Drivring Method	兩相激磁。Bipolar
控制功能 Control Functions	<ol style="list-style-type: none">1. 脈波輸入。Pulse Input2. 正/反轉。Direction control CW/CCW3. 微步控制。Microstep control(Full, 1/2, 1/4, 1/8, 1/16, 1/32)4. 激磁啟動/解除。Holding ON/OFF5. 定電流調整。Reference voltage for winding current set by VR. (PS. You must use scope to measure the winding current and adjust VR to your need.)6. 使用RS232通訊介面控制步進馬達驅動板動作。All functions of the stepping motor driver are controlled by RS-232 interface.
保護功能 Protections	<ol style="list-style-type: none">1. 電源逆接保護功能：輸入端電壓正負極接反時，馬達無法運轉。 1. Polarity Protection: If power polarity error, the motor can not be operated.2. 馬達過電流保護功能(ISD)：馬達運轉電流超過額定值時，自動斷流保護，避免馬達過電流燒毀。需斷電，故障排除後，才可重新通電運轉。 2. Over-current detection(ISD): When motor draws more current over the max. current limit, the driver board will be shut off automatically. Correct the error, re-start the power.3. 過溫保護(TSD)：驅動IC溫度超過140°C停止工作，直到驅IC驅動器降到140°C以下，重新供電恢復正常工作。 3. Thermal shutdown(TSD): If the temperature of the driver IC is Over 140°C, it will be shut down. Until the driver IC's temperature drop below 140°C, restart the power.
工作溫度 Operating Temperature	- 10°C~60°C
外型尺寸 Size	99x56x20mm
重量 Weight	17g
備註 Remark	<ol style="list-style-type: none">1. 無外殼、端子台、可變電阻、LED、指撥開關。 1. No Case、Terminal block、VR、LED、Dip Switch。2. 由RS-232通訊協定碼控制動作。 2. Control by RS-232 Interface only.