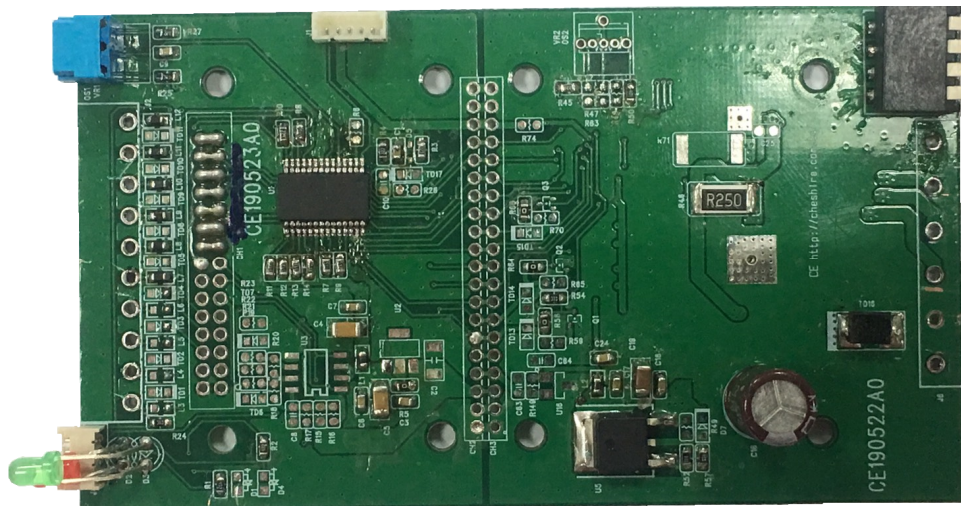


佶慶電機有限公司

CHESHIRE ELECTRIC COMPANY, LLC

2 Phase Bipolar Stepping Motor Driver 2相步進馬達驅動器

MODEL OPH1-45V15A-1	DRIVER SPECIFICATIONS 驅動器規格書	Page: 1 OF 1
------------------------	---------------------------------	--------------



驅動器規格 Motor Driver Specifications

輸入電源 Input Voltage	DC7V~45V
驅動電流 Operation Current	Max. 1.5A
驅動方式 Driverring Method	兩相激磁。Bipolar
GUI視窗連線 GUI Control(option)	<p>1. 使用USB-RS232連接線與驅動板連線，在PC上可以透過從GUI(Graphical User Interface)圖形用戶界面的軟體，來控制步進馬達驅動板動作。</p> <p>1. The GUI program communicates with the Driver board using a virtual serial port over a USB-To-RS232 cable on the PC. (option)</p>
控制功能 Control Functions	<p>1. 脈波輸入。Pulse Input</p> <p>2. 正/反轉。Direction control CW/CCW</p> <p>3. 微步控制。Microstep control(Full, 1/2, 1/4, 1/8, 1/16, 1/32, 1/128, 1/256)</p> <p>4. 激磁啟動/解除。Holding ON/OFF</p> <p>5. 定電流調整。Reference voltage for winding current set by VR. (PS. You must use scope to measure the winding current and adjust VR to your need.)</p>
保護功能 Protections	<p>1. 電源逆接保護功能：輸入端電壓正負極接反時，馬達無法運轉。</p> <p>1. Polarity Protection: If power polarity error, the motor can not be operated.</p> <p>2. 馬達過電流保護功能(ISD)：馬達運轉電流超過額定值時，自動斷流保護，避免馬達過電流燒毀。需斷電，故障排除後，才可重新通電運轉。</p> <p>2. Over-current detection(ISD): When motor draws more current over the max. current limit, the driver board will be shut off automatically. Correct the error, re-start the power.</p> <p>3. 過溫保護(TSD)：驅動IC溫度超過160°C停止工作，直到驅IC驅動器降到140°C以下，重新供電恢復正常工作。</p> <p>3. Thermal shutdown(TSD): If the temperature of the driver IC is Over 160°C, it will be shut down. Until the driver IC's temperature drop below 140°C, restart the power.</p>
工作溫度 Operating Temperature	- 10°C~60°C
外型尺寸 Size	104x56x20mm
重量 Weight	22g
備註 Remark	<p>1. 無外殼、端子台。</p> <p>1. No Case、Terminal block</p>