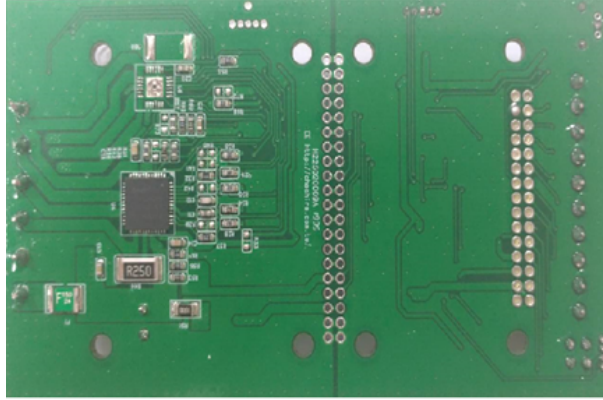


# 佶慶電機有限公司

CHESHIRE ELECTRIC COMPANY, LLC

## 2 Phase Bipolar Stepping Motor Driver 2相步進馬達驅動器

MODEL OPH1-45V15A-2	DRIVER SPECIFICATIONS 驅動器規格書	Page: 1 OF 1
------------------------	---------------------------------	--------------



### 驅動器規格 Motor Driver Specifications

輸入電源 Input Voltage	DC7V-45V
驅動電流 Operation Current	Max. 1.5A
驅動方式 Drivring Method	兩相激磁。Bipolar
控制功能 Control Functions	<ol style="list-style-type: none"><li>脈波輸入。Pulse Input</li><li>正/反轉。Direction control CW/CCW</li><li>微步控制。Microstep control(Full, 1/2, 1/4, 1/8, 1/16, 1/32, 1/128, 1/256)</li><li>激磁啟動/解除。Holding ON/OFF</li><li>定電流調整。Reference voltage for winding current set by VR. (PS. You must use scope to measure the winding current and adjust VR to your need.)</li><li>使用RS232通訊介面控制步進馬達驅動板動作。All functions of the stepping motor driver are controlled by RS-232 interface.</li></ol>
保護功能 Protections	<ol style="list-style-type: none"><li>電源逆接保護功能：輸入端電壓正負極接反時，馬達無法運轉。 1. Polarity Protection: If power polarity error, the motor can not be operated.</li><li>馬達過電流保護功能(ISD)：馬達運轉電流超過額定值時，自動斷流保護，避免馬達過電流燒毀。需斷電，故障排除後，才可重新通電運轉。 2. Over-current detection(ISD): When motor draws more current over the max. current limit, the driver board will be shut off automatically. Correct the error, re-start the power.</li><li>過溫保護(TSD)：驅動IC溫度超過160°C停止工作，直到驅IC驅動器降到140°C以下，重新供電恢復正常工作。 3. Thermal shutdown(TSD): If the temperature of the driver IC is Over 160°C, it will be shut down. Until the driver IC's temperature drop below 140°C, restart the power.</li></ol>
工作溫度 Operating Temperature	- 10°C ~60°C
外型尺寸 Size	99x56x20mm
重量 Weight	17g
備註 Remark	<ol style="list-style-type: none"><li>無外殼、端子台、可變電阻、LED、指撥開關。 1. No Case、Terminal block、VR、LED、Dip Switch。</li><li>由RS-232通訊協定碼控制動作。 2. Control by RS-232 Interface only.</li></ol>